

# MACROLED®

## INFORME LUMINOTÉCNICO BULBO 10W

90

120

150

-/+180

-150

-120

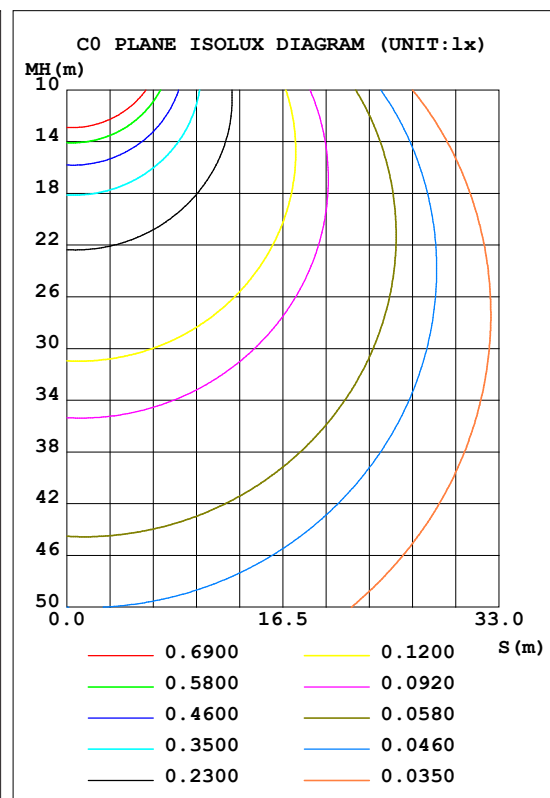
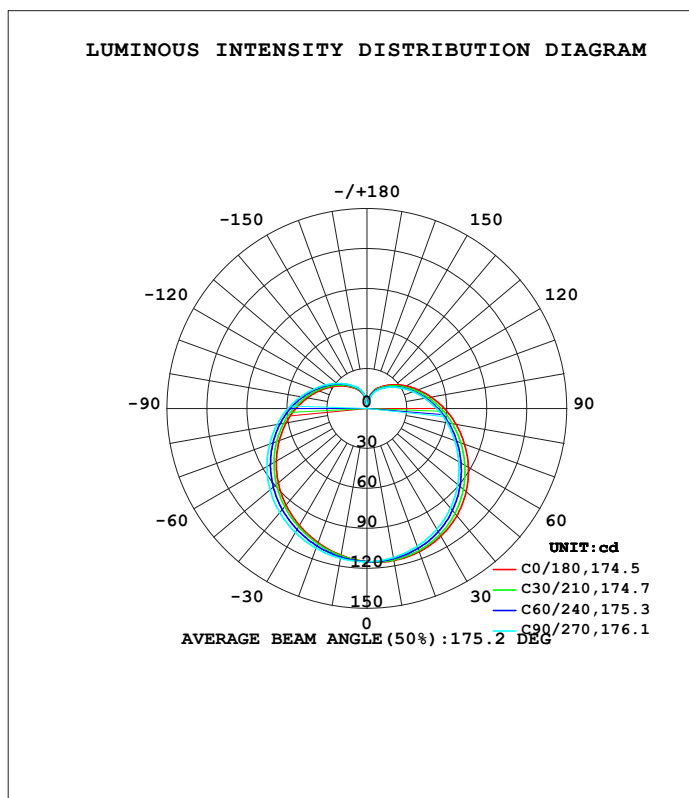
-90

Importa y distribuye: CORESA GROUP S.R.L Libertador 602 - Planta Baja B (C1001ABT)  
Ciudad Autónoma de Buenos Aires - Argentina - [www.macroled.com.ar](http://www.macroled.com.ar) - 0810 222 2882

EVERFINE GONIOPHOTOMETERS SYSTEM TEST REPORT  
LUMINAIRE PHOTOMETRIC TEST REPORT

NAME:	TYPE:	WEIGHT:
SPEC.:	DIM.:	SERIAL No.:01
MFR.:	SUR.:	Shielding Angle:

DATA OF LAMP		PHOTOMETRIC DATA			
MODEL	A3-3-KD3 G3	Imax (cd)	115.9	S/MH (C0/180)	1.33
NOMINAL POWER (W)	9	LOR (%)	100.0	S/MH (C90/270)	1.41
RATED VOLTAGE (V)	220	TOTAL FLUX (lm)	734.99	$\eta$ UP, DN (C0-180)	13.6, 35.4
NOMINAL FLUX (lm)	734.989	CIE CLASS	SEMI-D.	$\eta$ UP, DN (C180-360)	14.7, 36.3
LAMPS INSIDE	1	$\eta$ up (%)	28.3	CIBSE SHR NOM	1.50
TEST VOLTAGE (V)	220	$\eta$ down (%)	71.7	CIBSE SHR MAX	1.55



C Range: 0 - 360DEG  
C Interval: 30.0DEG  
Test Speed: HIGH  
Temperature: 25.3DEG  
Operators:  
Test Date: 2018-10-26

$\gamma$  Range: 0 - 180DEG  
 $\gamma$  Interval: 1.0DEG  
Test System: EVERFINE GO-SPEX500\_V1 SYSTEM V2.0.405.8  
Humidity: 65.0%  
Test Distance: 3.116m [K=1.0000]  
Remarks:

## ZONAL FLUX DIAGRAM

### ZONAL FLUX DIAGRAM:

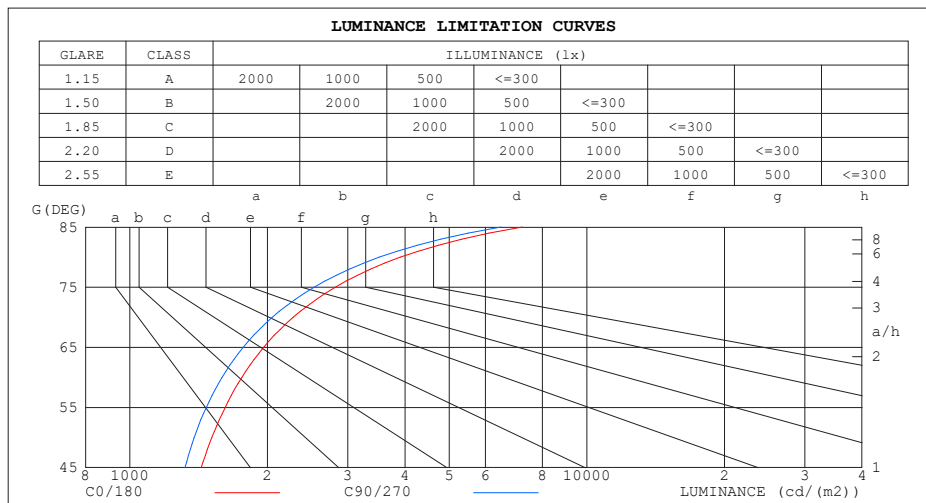
y	C0	C45	C90	C135	C180	C225	C270	C315	y	Φ zone	Φ total	%lum,lamp
10	115.9	114.9	113.6	112.4	111.9	112.8	114.2	115.3	0- 10	10.92	10.92	1.49,1.49
20	114.4	112.7	110.2	108.1	107.2	108.9	111.6	113.5	10- 20	31.84	42.76	5.82,5.82
30	110.8	108.1	104.8	102.4	101.4	103.8	107.4	109.7	20- 30	50.18	92.94	12.6,12.6
40	105.0	101.4	97.55	95.34	94.62	97.56	101.9	104.3	30- 40	64.61	157.6	21.4,21.4
50	97.17	92.78	88.94	87.23	86.92	90.26	94.97	97.06	40- 50	74.18	231.7	31.5,31.5
60	87.90	83.20	79.58	78.47	78.59	82.16	86.72	88.37	50- 60	78.47	310.2	42.2,42.2
70	77.90	73.33	70.11	69.57	70.02	73.57	77.73	78.86	60- 70	77.86	388.1	52.8,52.8
80	67.79	63.66	60.97	60.88	61.54	64.88	68.45	69.07	70- 80	73.21	461.3	62.8,62.8
90	58.14	54.48	52.26	52.52	53.38	56.41	59.36	59.55	80- 90	65.63	526.9	71.7,71.7
100	49.14	46.02	44.26	44.76	45.68	48.31	50.67	50.55	90-100	56.23	583.1	79.3,79.3
110	41.08	38.43	37.06	37.69	38.64	40.86	42.71	42.41	100-110	46.13	629.3	85.6,85.6
120	34.00	31.76	30.73	31.37	32.29	34.14	35.57	35.20	110-120	36.19	665.5	90.5,90.5
130	27.88	26.02	25.19	25.78	26.66	28.21	29.33	28.93	120-130	27.07	692.5	94.2,94.2
140	22.67	21.13	20.40	20.95	21.74	23.05	23.92	23.53	130-140	19.14	711.7	96.8,96.8
150	18.26	16.97	16.34	16.78	17.47	18.61	19.29	18.96	140-150	12.58	724.3	98.5,98.5
160	13.84	12.44	11.06	12.32	13.42	14.63	15.23	14.79	150-160	7.355	731.6	99.5,99.5
170	6.744	3.490	2.756	4.913	7.199	8.785	9.437	8.600	160-170	3.055	734.7	100,100
180	1.009	1.008	1.003	0.9979	1.010	1.006	1.004	0.9983	170-180	0.3216	735.0	100,100
DEG	LUMINOUS INTENSITY:cd									UNIT:lm		

C Range: 0 - 360DEG  
C Interval: 30.0DEG  
Test Speed: HIGH  
Temperature:25.3DEG  
Operators:  
Test Date:2018-10-26

y Range: 0 - 180DEG  
y Interval: 1.0DEG  
Test System:EVERFINE GO-SPEX500\_V1 SYSTEM V2.0.405.8  
Humidity:65.0%  
Test Distance:3.116m [K=1.0000]  
Remarks:

## LUMINANCE LIMITATION CURVES

<b>NAME :</b>	<b>TYPE :</b>	<b>WEIGHT :</b>
<b>SPEC. :</b>	<b>DIM. :</b>	<b>SERIAL No. :01</b>
<b>MFR. :</b>	<b>SUR. :</b>	<b>Shielding Angle:</b>



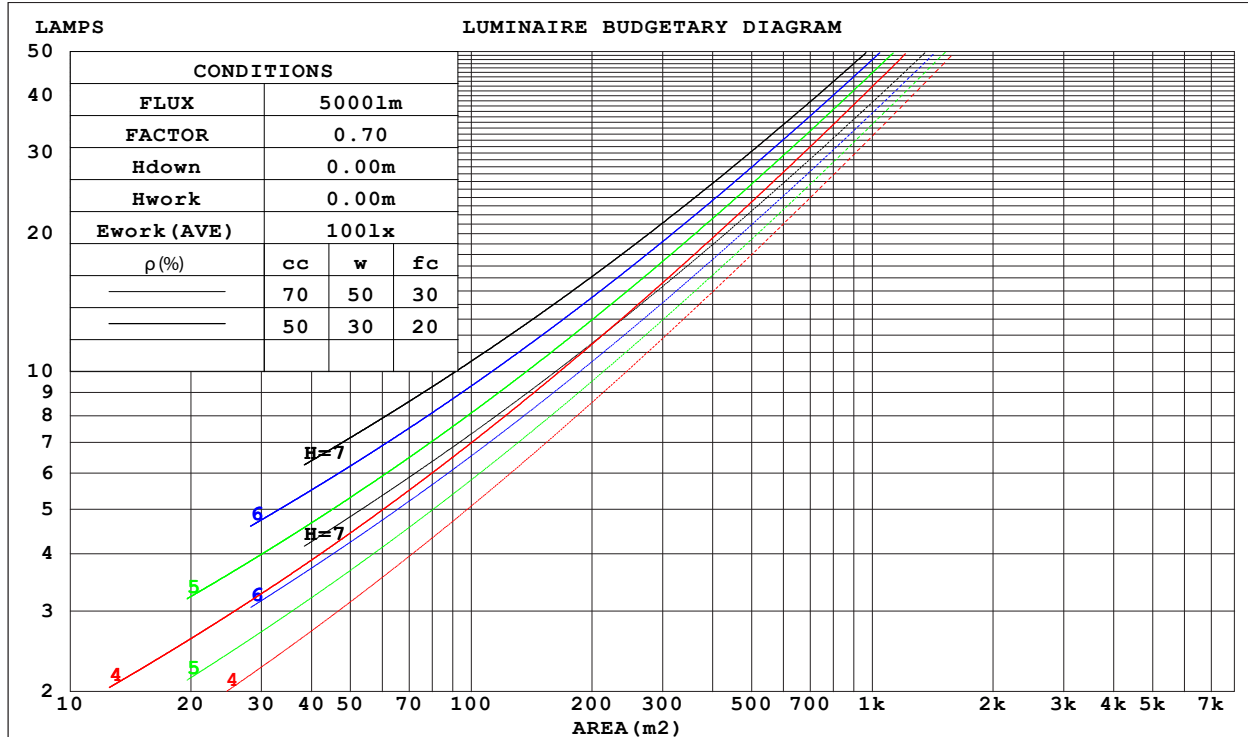
C Range: 0 - 360DEG  
C Interval: 30.0DEG  
Test Speed: HIGH  
Temperature: 25.3DEG  
Operators:  
Test Date: 2018-10-26

γ Range: 0 - 180DEG  
γ Interval: 1.0DEG  
Test System: EVERFINE GO-SPEX500\_V1 SYSTEM V2.0.405.8  
Humidity: 65.0%  
Test Distance: 3.116m [K=1.0000]  
Remarks:

## CU AND LUMINAIRE BUDGETARY ESTIMATE DIAGRAM

NAME :	TYPE :	WEIGHT :
SPEC. :	DIM. :	SERIAL No. :01
MFR. :	SUR. :	Shielding Angle :

$\rho_{cc}$	80%			70%			50%			30%			10%			0
$\rho_w$	50%	30%	10%	50%	30%	10%	50%	30%	10%	50%	30%	10%	50%	30%	10%	0
$\rho_{fc}$	20%			20%			20%			20%			20%			0
RCR	RCR:Room Cavity Ratio						Coefficients of Utilization(CU)									
0.0	1.12	1.12	1.12	1.06	1.06	1.06	.95	.95	.95	.85	.85	.85	.76	.76	.76	.72
1.0	.92	.86	.81	.87	.82	.77	.77	.73	.70	.69	.66	.63	.61	.58	.56	.52
2.0	.78	.70	.63	.74	.67	.60	.66	.60	.55	.58	.53	.49	.51	.47	.44	.40
3.0	.68	.58	.51	.64	.55	.49	.57	.50	.44	.50	.45	.40	.44	.40	.36	.32
4.0	.59	.49	.42	.56	.47	.40	.50	.42	.37	.44	.38	.33	.39	.34	.30	.27
5.0	.52	.43	.36	.49	.41	.34	.44	.37	.31	.39	.33	.28	.34	.29	.25	.22
6.0	.47	.37	.30	.44	.36	.29	.39	.32	.27	.35	.29	.24	.31	.26	.22	.19
7.0	.42	.33	.26	.40	.31	.25	.36	.28	.23	.32	.26	.21	.28	.23	.19	.17
8.0	.38	.29	.23	.36	.28	.22	.32	.25	.21	.29	.23	.19	.26	.21	.17	.15
9.0	.35	.26	.21	.33	.25	.20	.30	.23	.18	.27	.21	.17	.24	.19	.15	.13
10.0	.32	.24	.18	.30	.23	.18	.27	.21	.16	.25	.19	.15	.22	.17	.14	.12



C Range: 0 - 360DEG  
C Interval: 30.0DEG  
Test Speed: HIGH  
Temperature: 25.3DEG  
Operators:  
Test Date: 2018-10-26

$\gamma$  Range: 0 - 180DEG  
 $\gamma$  Interval: 1.0DEG  
Test System: EVERFINE GO-SPEX500\_V1 SYSTEM V2.0.405.8  
Humidity: 65.0%  
Test Distance: 3.116m [K=1.0000]  
Remarks:

## WEC AND CCEC

NAME:	TYPE:	WEIGHT:
SPEC.:	DIM.:	SERIAL No.:01
MFR.:	SUR.:	Shielding Angle:

$\rho_{cc}$	80%			70%			50%			30%			10%			0
$\rho_w$	50%	30%	10%	50%	30%	10%	50%	30%	10%	50%	30%	10%	50%	30%	10%	0
$\rho_{fc}$	20%			20%			20%			20%			20%			0
RCR	RCR:Room Cavity Ratio						Wall Exitance Coefficients(WEC)									
0.0																
1.0	.405	.230	.073	.389	.222	.070	.359	.206	.066	.332	.191	.061	.307	.178	.057	
2.0	.343	.188	.058	.329	.181	.056	.302	.168	.052	.277	.155	.049	.254	.144	.045	
3.0	.302	.161	.048	.289	.155	.047	.264	.143	.044	.241	.132	.041	.220	.122	.038	
4.0	.270	.140	.041	.258	.135	.040	.236	.125	.037	.215	.115	.035	.195	.106	.032	
5.0	.244	.124	.036	.233	.120	.035	.213	.111	.033	.194	.102	.030	.176	.094	.028	
6.0	.223	.112	.032	.213	.108	.031	.194	.100	.029	.177	.092	.027	.160	.084	.025	
7.0	.205	.101	.029	.196	.098	.028	.179	.090	.026	.163	.083	.024	.147	.077	.023	
8.0	.190	.093	.026	.181	.089	.025	.166	.083	.024	.151	.076	.022	.136	.070	.020	
9.0	.177	.085	.024	.169	.082	.023	.154	.076	.022	.140	.070	.020	.127	.065	.019	
10.0	.165	.079	.022	.158	.076	.021	.144	.071	.020	.131	.065	.019	.119	.060	.017	

$\rho_{cc}$	80%			70%			50%			30%			10%			0
$\rho_w$	50%	30%	10%	50%	30%	10%	50%	30%	10%	50%	30%	10%	50%	30%	10%	0
$\rho_{fc}$	20%			20%			20%			20%			20%			0
RCR	RCR:Room Cavity Ratio						Ceiling Cavity Exitance Coefficients(CCEC)									
0.0	.406	.406	.406	.347	.347	.347	.237	.237	.237	.136	.136	.136	.044	.044	.044	
1.0	.404	.373	.344	.346	.320	.296	.237	.220	.205	.136	.127	.119	.044	.041	.039	
2.0	.398	.351	.311	.341	.302	.269	.234	.209	.187	.135	.121	.110	.043	.039	.036	
3.0	.391	.335	.290	.335	.289	.251	.230	.201	.176	.133	.117	.104	.043	.038	.034	
4.0	.383	.323	.276	.329	.279	.240	.226	.194	.169	.131	.114	.100	.042	.037	.033	
5.0	.375	.313	.267	.322	.271	.232	.222	.189	.164	.129	.111	.097	.041	.036	.032	
6.0	.368	.305	.260	.316	.264	.227	.218	.185	.160	.127	.109	.095	.041	.036	.031	
7.0	.361	.299	.255	.310	.259	.223	.214	.182	.158	.125	.107	.094	.040	.035	.031	
8.0	.354	.293	.252	.305	.255	.219	.211	.179	.156	.123	.105	.093	.040	.035	.031	
9.0	.348	.289	.249	.300	.251	.217	.208	.176	.154	.121	.104	.092	.039	.034	.030	
10.0	.342	.285	.246	.295	.247	.215	.205	.174	.153	.119	.103	.091	.039	.034	.030	

C Range: 0 - 360DEG  
C Interval: 30.0DEG  
Test Speed: HIGH  
Temperature:25.3DEG  
Operators:  
Test Date:2018-10-26

$\gamma$  Range: 0 - 180DEG  
 $\gamma$  Interval: 1.0DEG  
Test System:EVERFINE GO-SPEX500\_V1 SYSTEM V2.0.405.8  
Humidity:65.0%  
Test Distance:3.116m [K=1.0000]  
Remarks:

## UGR(Unified Glare Rating) Table

NAME:		TYPE:					WEIGHT:				
SPEC.:		DIM.:					SERIAL No.:01				
MFR.:		SUR.:					Shielding Angle:				
ceiling/cavity		0.7	0.7	0.5	0.5	0.3	0.7	0.7	0.5	0.5	0.3
walls		0.5	0.3	0.5	0.3	0.3	0.5	0.3	0.5	0.3	0.3
working plane		0.2	0.2	0.2	0.2	0.2	0.2	0.2	0.2	0.2	0.2
Room dimensions		Viewed crosswise					Viewed endwise				
x = 2H	y = 2H	14.0	15.2	14.6	15.9	16.7	13.5	14.8	14.2	15.5	16.2
	3H	16.6	17.8	17.3	18.5	19.3	16.1	17.3	16.8	18.0	18.8
	4H	18.1	19.2	18.8	19.9	20.7	17.6	18.7	18.2	19.4	20.2
	6H	19.7	20.8	20.4	21.5	22.4	19.2	20.2	19.9	20.9	21.8
	8H	20.7	21.7	21.4	22.4	23.3	20.0	21.1	20.8	21.8	22.7
	12H	21.7	22.7	22.4	23.4	24.3	21.1	22.1	21.8	22.8	23.7
4H	2H	14.7	15.8	15.4	16.5	17.4	14.4	15.5	15.1	16.2	17.1
	3H	17.6	18.6	18.3	19.3	20.2	17.2	18.2	17.9	18.9	19.8
	4H	19.2	20.1	20.0	20.9	21.8	18.8	19.7	19.5	20.4	21.3
	6H	21.1	21.9	21.8	22.6	23.6	20.5	21.4	21.3	22.1	23.1
	8H	22.1	22.8	22.9	23.6	24.6	21.5	22.3	22.3	23.1	24.0
	12H	23.2	23.9	24.0	24.7	25.7	22.7	23.4	23.5	24.2	25.1
8H	4H	19.8	20.5	20.6	21.3	22.3	19.4	20.2	20.2	21.0	21.9
	6H	21.9	22.5	22.7	23.3	24.3	21.5	22.1	22.3	22.9	23.9
	8H	23.1	23.7	23.9	24.5	25.5	22.6	23.2	23.5	24.1	25.1
	12H	24.5	25.0	25.3	25.9	26.9	24.0	24.5	24.8	25.4	26.4
12H	4H	19.9	20.6	20.7	21.4	22.4	19.6	20.3	20.4	21.1	22.1
	6H	22.1	22.7	23.0	23.5	24.5	21.8	22.3	22.6	23.2	24.2
	8H	23.5	24.0	24.3	24.8	25.8	23.1	23.6	23.9	24.4	25.4
Variations with the observer position at spacings:											
S = 1.0H		+ 0.1 / - 0.1					+ 0.1 / - 0.1				
1.5H		+ 0.2 / - 0.3					+ 0.2 / - 0.3				
2.0H		+ 0.3 / - 0.4					+ 0.3 / - 0.4				

CIE Pub.117, 735.0 lm Total Lamp Luminous Flux Correct (8log(F/F0) = -1.1)

C Range: 0 - 360DEG  
C Interval: 30.0DEG  
Test Speed: HIGH  
Temperature:25.3DEG  
Operators:  
Test Date:2018-10-26

γ Range: 0 - 180DEG  
γ Interval: 1.0DEG  
Test System:EVERFINE GO-SPEX500\_V1 SYSTEM V2.0.405.8  
Humidity:65.0%  
Test Distance:3.116m [K=1.0000]  
Remarks:

## UTILIZATION FACTORS TABLE

NAME :	TYPE :	WEIGHT :
SPEC. :	DIM. :	SERIAL No. : 01
MFR. :	SUR. :	Shielding Angle :

REFLECTANCE										
Ceiling	0.8	0.8	0.8	0.7	0.7	0.7	0.5	0.5	0.5	0
Walls	0.7	0.5	0.3	0.7	0.5	0.3	0.7	0.5	0.3	0
Working plane	0.2	0.2	0.2	0.2	0.2	0.2	0.2	0.2	0.2	0
ROOM INDEX	UTILIZATION FACTORS (PERCENT) $k(RI) \times RCR = 5$									
k = 0.60	43	30	23	41	29	22	39	28	22	15
0.80	51	38	29	50	37	29	46	35	28	19
1.00	59	45	36	56	43	35	52	43	33	24
1.25	65	52	42	63	50	41	57	47	39	28
1.50	71	57	48	67	55	47	62	51	44	32
2.00	79	66	57	75	64	55	68	59	52	38
2.50	83	72	63	79	69	61	72	63	57	42
3.00	87	77	69	83	73	66	75	67	61	45
4.00	92	83	76	87	79	73	79	72	67	49
5.00	96	88	81	91	84	78	81	76	71	52
ROOM INDEX	UF(total)									Direct
According to DIN EN 13032-2 2004			Suspended				SHRNOM = 1.00			

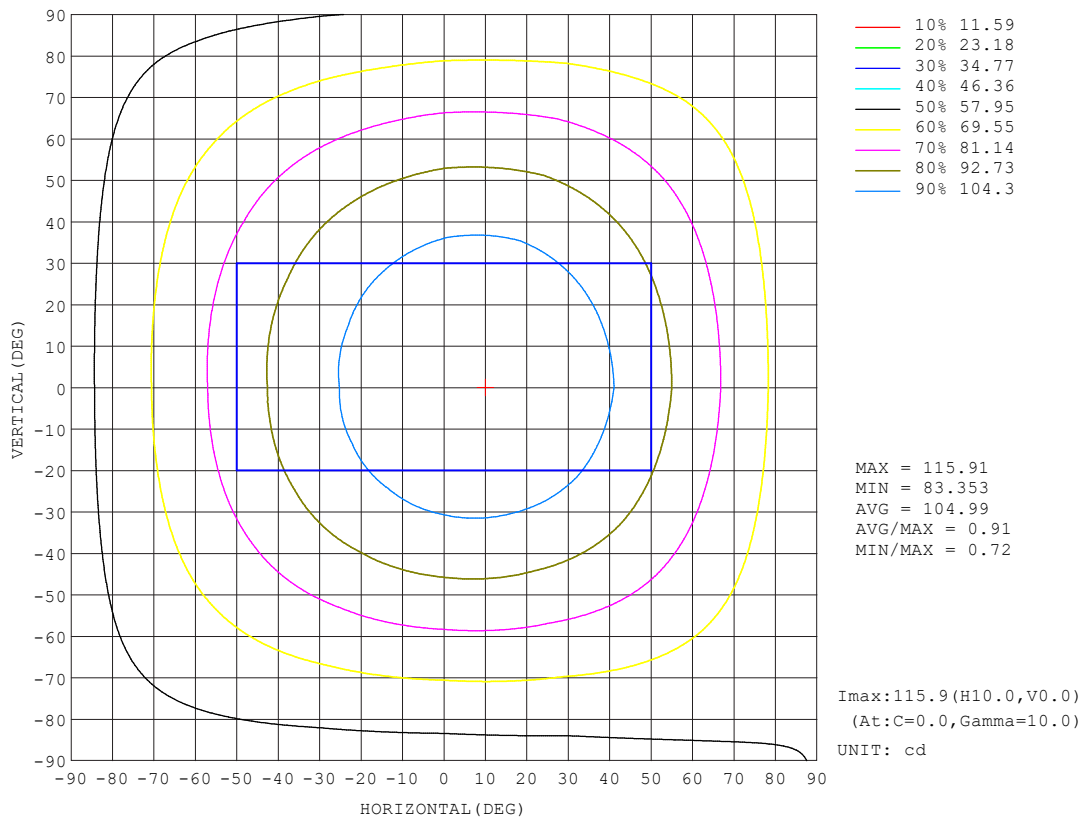
C Range: 0 - 360DEG  
C Interval: 30.0DEG  
Test Speed: HIGH  
Temperature: 25.3DEG  
Operators:  
Test Date: 2018-10-26

$\gamma$  Range: 0 - 180DEG  
 $\gamma$  Interval: 1.0DEG  
Test System: EVERFINE GO-SPEX500\_V1 SYSTEM V2.0.405.8  
Humidity: 65.0%  
Test Distance: 3.116m [K=1.0000]  
Remarks:



## ISOCANDELA DIAGRAM

NAME :	TYPE :	WEIGHT :
SPEC. :	DIM. :	SERIAL No. :01
MFR. :	SUR. :	Shielding Angle:



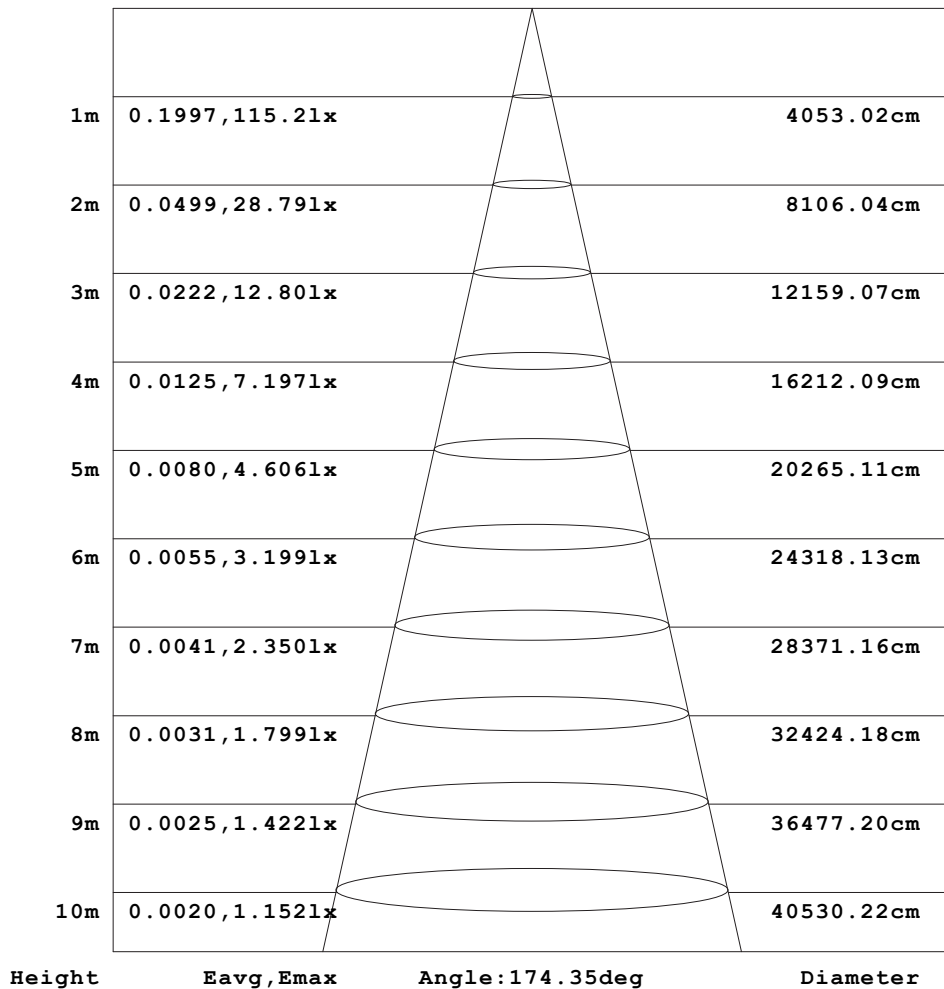
C Range: 0 - 360DEG  
C Interval: 30.0DEG  
Test Speed: HIGH  
Temperature:25.3DEG  
Operators:  
Test Date:2018-10-26

γ Range: 0 - 180DEG  
γ Interval: 1.0DEG  
Test System:EVERFINE GO-SPEX500\_V1 SYSTEM V2.0.405.8  
Humidity:65.0%  
Test Distance:3.116m [K=1.0000]  
Remarks:

## AAI Figure

NAME :	TYPE :	WEIGHT :
SPEC. :	DIM. :	SERIAL No. : 01
MFR. :	SUR. :	Shielding Angle :

Flux out: 514.5 lm



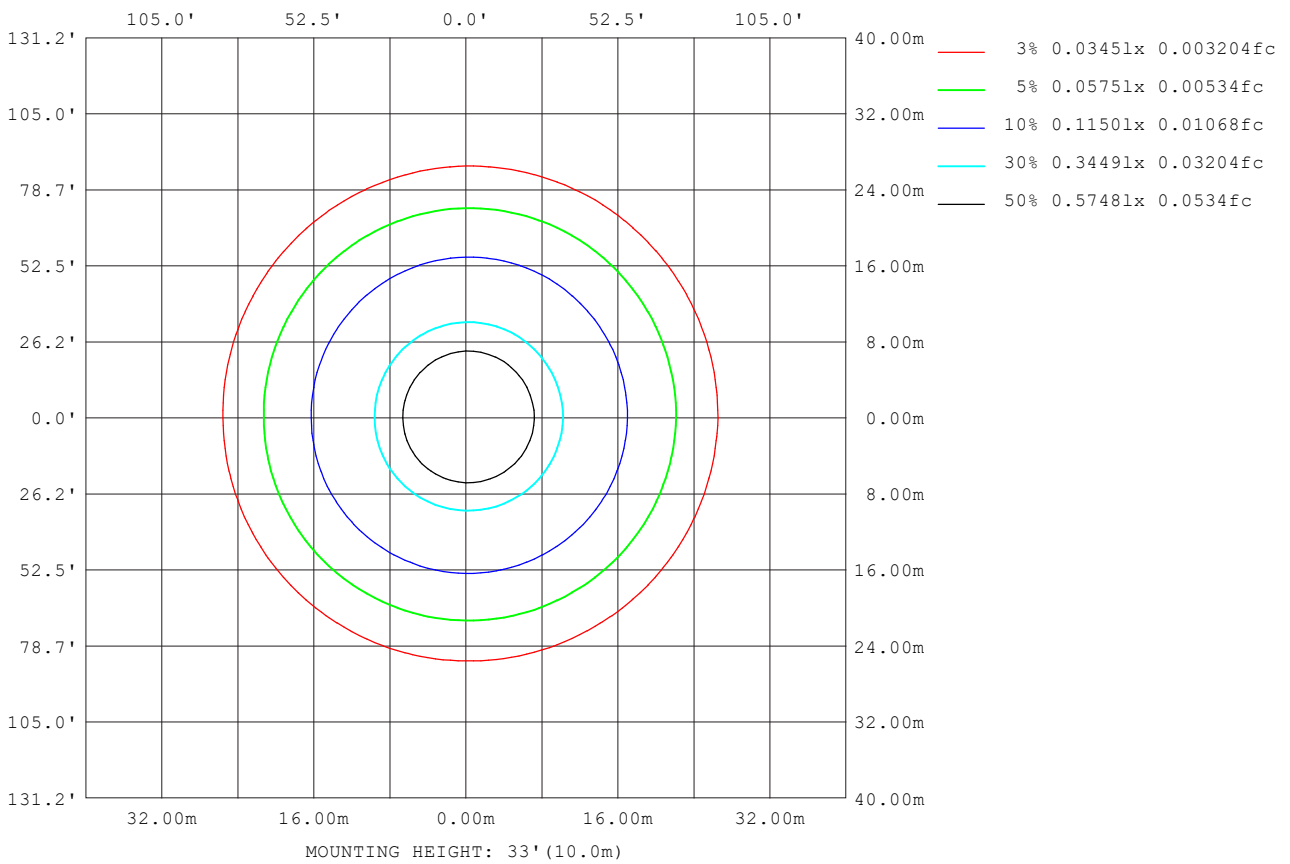
Note: The Curves indicate the illuminated area and the average illumination when the luminaire is at different distance.

C Range: 0 - 360DEG  
C Interval: 30.0DEG  
Test Speed: HIGH  
Temperature: 25.3DEG  
Operators:  
Test Date: 2018-10-26

γ Range: 0 - 180DEG  
γ Interval: 1.0DEG  
Test System: EVERFINE GO-SPEX500\_V1 SYSTEM V2.0.405.8  
Humidity: 65.0%  
Test Distance: 3.116m [K=1.0000]  
Remarks:

## ISOLUX DIAGRAM

<b>NAME :</b>	<b>TYPE :</b>	<b>WEIGHT :</b>
<b>SPEC. :</b>	<b>DIM. :</b>	<b>SERIAL No. :01</b>
<b>MFR. :</b>	<b>SUR. :</b>	<b>Shielding Angle:</b>



C Range: 0 - 360DEG  
C Interval: 30.0DEG  
Test Speed: HIGH  
Temperature: 25.3DEG  
Operators:  
Test Date: 2018-10-26

γ Range: 0 - 180DEG  
γ Interval: 1.0DEG  
Test System: EVERFINE GO-SPEX500\_V1 SYSTEM V2.0.405.8  
Humidity: 65.0%  
Test Distance: 3.116m [K=1.0000]  
Remarks:

## LED Avg.L Report

NAME :	TYPE :	WEIGHT :
SPEC. :	DIM. :	SERIAL No. : 01
MFR. :	SUR. :	Shielding Angle :

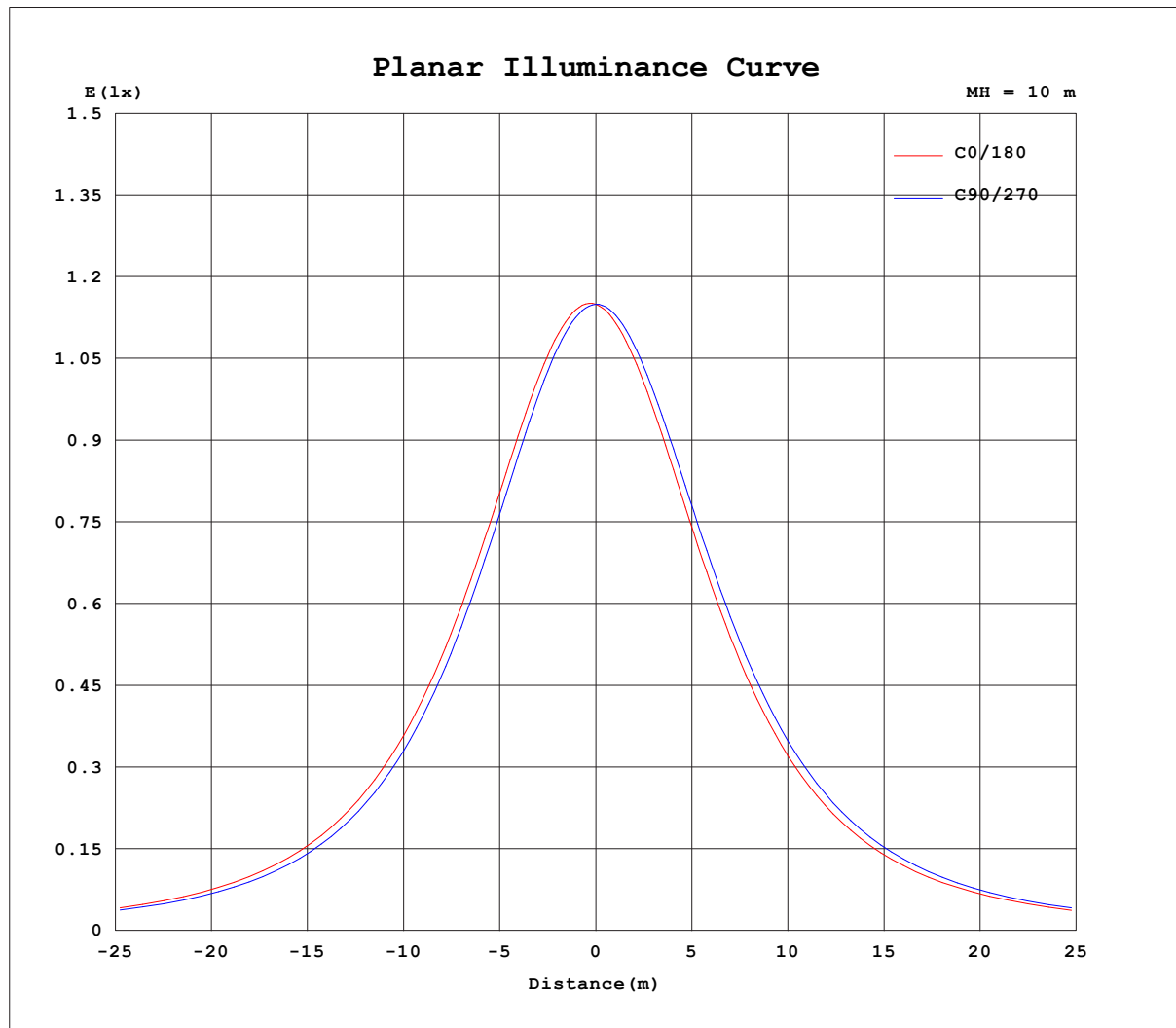
AvgL	cd/m2
L_0~180 (65) av	1861
L_0~180 (75) av	2677
L_0~180 (85) av	6901
L_90~270 (65) av	1859
L_90~270 (75) av	2677
L_90~270 (85) av	6909
L_45 (65) av	1856
L_45 (75) av	2673
L_45 (85) av	6899

Standard: GB/T 29293-2012

C Range: 0 - 360DEG  
C Interval: 30.0DEG  
Test Speed: HIGH  
Temperature: 25.3DEG  
Operators:  
Test Date: 2018-10-26

γ Range: 0 - 180DEG  
γ Interval: 1.0DEG  
Test System: EVERFINE GO-SPEX500\_V1 SYSTEM V2.0.405.8  
Humidity: 65.0%  
Test Distance: 3.116m [K=1.0000]  
Remarks:

## Planar Illuminance Curve



C Range: 0 - 360DEG  
C Interval: 30.0DEG  
Test Speed: HIGH  
Temperature: 25.3DEG  
Operators:  
Test Date: 2018-10-26

$\gamma$  Range: 0 - 180DEG  
 $\gamma$  Interval: 1.0DEG  
Test System: EVERFINE GO-SPEX500\_V1 SYSTEM V2.0.405.8  
Humidity: 65.0%  
Test Distance: 3.116m [K=1.0000]  
Remarks:

## LUMINOUS DISTRIBUTION INTENSITY DATA

NAME :	TYPE :	WEIGHT :
SPEC. :	DIM. :	SERIAL No. : 01
MFR. :	SUR. :	Shielding Angle :

Table--1

UNIT: cd

C (DEG) γ (DEG)	0	30	60	90	120	150	180	210	240	270	300	330						
0	115	115	115	115	115	115	115	115	115	115	115	115						
5	116	115	115	115	114	114	114	114	114	115	115	116						
10	116	115	114	114	113	112	112	112	113	114	115	116						
15	115	115	113	112	111	110	110	110	112	113	114	115						
20	114	113	112	110	109	108	107	108	110	112	113	114						
25	113	112	110	108	106	105	104	105	108	110	111	112						
30	111	109	107	105	103	102	101	103	105	107	109	110						
35	108	106	104	101	99.5	98.5	98.1	99.5	102	105	107	108						
40	105	103	99.9	97.6	95.8	94.9	94.6	96.2	99.0	102	104	105						
45	101	98.8	95.7	93.4	91.7	91.0	90.9	92.6	95.5	98.6	101	101						
50	97.2	94.4	91.1	88.9	87.5	87.0	86.9	88.7	91.8	95.0	96.9	97.2						
55	92.7	89.7	86.4	84.3	83.1	82.8	82.8	84.7	87.8	91.0	92.8	92.9						
60	87.9	84.9	81.5	79.6	78.5	78.4	78.6	80.6	83.7	86.7	88.4	88.3						
65	82.9	79.9	76.6	74.8	74.0	74.1	74.3	76.4	79.4	82.3	83.8	83.6						
70	77.9	74.9	71.8	70.1	69.5	69.7	70.0	72.1	75.0	77.7	79.0	78.7						
75	72.8	69.9	67.0	65.5	65.0	65.3	65.8	67.8	70.6	73.1	74.2	73.7						
80	67.8	65.0	62.3	61.0	60.7	61.1	61.5	63.5	66.2	68.5	69.3	68.8						
85	62.9	60.3	57.8	56.6	56.4	56.9	57.4	59.3	61.9	63.8	64.5	63.9						
90	58.1	55.7	53.3	52.3	52.2	52.8	53.4	55.2	57.6	59.4	59.9	59.2						
95	53.5	51.2	49.1	48.2	48.2	48.9	49.4	51.2	53.4	55.0	55.3	54.6						
100	49.1	47.0	45.0	44.3	44.4	45.1	45.7	47.3	49.3	50.7	50.9	50.2						
105	45.0	43.0	41.2	40.6	40.8	41.5	42.1	43.6	45.4	46.6	46.7	46.0						
110	41.1	39.2	37.6	37.1	37.4	38.0	38.6	40.0	41.7	42.7	42.8	42.0						
115	37.4	35.7	34.3	33.8	34.1	34.8	35.4	36.6	38.2	39.0	39.0	38.3						
120	34.0	32.4	31.1	30.7	31.0	31.7	32.3	33.5	34.8	35.6	35.5	34.9						
125	30.8	29.4	28.2	27.9	28.2	28.8	29.4	30.5	31.7	32.3	32.3	31.6						
130	27.9	26.6	25.5	25.2	25.5	26.1	26.7	27.6	28.8	29.3	29.2	28.6						
135	25.2	24.0	23.0	22.7	23.0	23.6	24.1	25.0	26.0	26.5	26.4	25.8						
140	22.7	21.6	20.7	20.4	20.7	21.2	21.7	22.6	23.5	23.9	23.8	23.3						
145	20.4	19.4	18.6	18.3	18.5	19.0	19.5	20.3	21.2	21.5	21.4	20.9						
150	18.3	17.3	16.6	16.3	16.6	17.0	17.5	18.3	19.0	19.3	19.2	18.8						
155	16.3	15.3	14.6	14.0	14.6	14.8	15.6	16.3	17.0	17.3	17.1	16.8						
160	13.8	12.8	12.1	11.1	12.2	12.4	13.4	14.3	14.9	15.2	15.0	14.6						
165	10.9	9.74	8.78	7.63	9.28	9.07	10.7	11.8	12.4	12.7	12.4	11.9						
170	6.74	4.52	2.47	2.76	4.02	5.81	7.20	8.36	9.21	9.44	8.92	8.28						
175	0.97	0.96	0.97	0.96	0.96	0.95	1.02	2.19	3.31	3.41	2.38	1.23						
180	1.01	1.01	1.01	1.00	1.00	0.99	1.01	1.01	1.01	1.00	1.00	1.00						

C Range: 0 - 360DEG  
C Interval: 30.0DEG  
Test Speed: HIGH  
Temperature: 25.3DEG  
Operators:  
Test Date: 2018-10-26

γ Range: 0 - 180DEG  
γ Interval: 1.0DEG  
Test System: EVERFINE GO-SPEX500\_V1 SYSTEM V2.0.405.8  
Humidity: 65.0%  
Test Distance: 3.116m [K=1.0000]  
Remarks: